



Government of India
Ministry of Earth Sciences



India Meteorological Department

PRESS RELEASE - 1

Time of issue: 1500 hours IST

Dated: 03-12-2021

Sub: Cyclonic Storm 'JAWAD' over westcentral Bay of Bengal: Cyclone Alert for north Andhra Pradesh and Odisha coasts – Yellow Message.

A Low Pressure Area formed over South Thailand & neighbourhood in the morning (0830 hours IST) of 30th November. It emerged into central parts of Andaman Sea in the same evening (1730 hrs IST). It lay as a well marked low pressure area over southeast Bay of Bengal (BoB) & adjoining Andaman Sea in the early morning (0530 hrs IST) of 2nd December. Under favourable environmental conditions, it concentrated into a depression over southeast Bay of Bengal in the same evening (1730 hours IST). Moving north-northwestwards, it concentrated into a deep depression over westcentral & adjoining south BoB in the morning (0530 hours IST) and into the Cyclonic Storm "JAWAD" (pronounced as JOWAD) over westcentral BoB in the noon (1130 hours IST) of today, the 3rd December, 2021.

It lay centered at 1130 hrs IST of today, the 3rd December 2021 over westcentral BoB near latitude 14.5°N and longitude 85.5°E, about 420 km south-southeast of Vishakhapatnam (Andhra Pradesh), 530 km south-southeast of Gopalpur (Odisha) and 650 km south-southwest of Paradip (Odisha).

It is likely to move north-northwestwards, intensify further and reach westcentral BoB off north Andhra Pradesh – south Odisha coasts by tomorrow, the 4th December morning. Thereafter, it is likely to recurve north-northeastwards and move along Odisha coast reaching near Puri around 5th December noon. Subsequently it is likely to continue to move north-northeastwards along coastal Odisha towards West Bengal coast.

Forecast track and intensity are given in the following table:

Date/Time(IST)	Position (Lat. °N/ long. °E)	Maximum sustained surface wind speed (Kmph)	Category of cyclonic disturbance
03.12.21/1130	14.5/85.5	60-70 gusting to 80	Cyclonic Storm
03.12.21/1730	15.0/85.1	70-80 gusting to 90	Cyclonic Storm
03.12.21/2330	15.7/84.6	75-85 gusting to 95	Cyclonic Storm
04.12.21/0530	16.5/84.3	80-90 gusting to 100	Cyclonic Storm
04.12.21/1130	17.1/84.2	90-100 gusting to 110	Severe Cyclonic Storm
04.12.21/2330	18.4/84.7	90-100 gusting to 110	Severe Cyclonic Storm
05.12.21/1130	19.5/85.6	80-90 gusting to 100	Cyclonic Storm
05.12.21/2330	20.7/86.9	60-70 gusting to 80	Cyclonic Storm

Warnings:

(i) Rainfall (warning graphics enclosed)

3rd Dec.: Light to moderate rainfall at many places with heavy to very heavy rainfall at isolated places over north coastal Andhra Pradesh and south coastal Odisha.

4th Dec.: Light to moderate rainfall at most places with heavy to very heavy rainfall & extremely heavy falls at isolated places very likely over south coastal Odisha and north coastal Andhra Pradesh and heavy to very heavy rainfall at isolated places over north coastal Odisha & adjoining interior districts and also over coastal districts of Gangetic west Bengal.

Contact: Cyclone Warning Division, Office of the Director General of Meteorology,
India Meteorological Department, Ministry of Earth Sciences.

Phone: (91) 11-24652484, FAX: (91) 11-24643128, 24623220, E-mail: cwdhq2008@gmail.com, Website: rsmcnewdelhi.imd.gov.in

Spatial rainfall distribution: Isolated: <25%, A few: 26-50%, Many: 51-75%, Most: 76-100%

Rainfall amount (mm): Heavy rain: 64.5 – 115.5, Very heavy rain: 115.6 – 204.4, Extremely heavy rain: 204.5 or more.

5th Dec.: Light to moderate rainfall at many places with heavy to very heavy rainfall at isolated places likely over Gangetic West Bengal & north Odisha and heavy rainfall at isolated places over Assam & Meghalaya, Mizoram and Tripura.

6th Dec.: Light to moderate rainfall at many places with heavy to very heavy rainfall at isolated places likely over Assam & Meghalaya, Mizoram and Tripura and heavy rainfall at isolated places over west Bengal.

(ii) Wind warning

- Squally wind speed reaching 60-70 kmph gusting to 80 kmph over westcentral and adjoining southeast & eastcentral Bay of Bengal during next 06 hours.
- Gale winds speed reaching 70-80 kmph gusting to 90 kmph likely to prevail over westcentral & adjoining northwest Bay of Bengal from today evening and gradually increase becoming 90-100 kmph gusting to 110 kmph over northwest & adjoining west-central Bay of Bengal from the evening of 4th December for the subsequent 12 hours.
- Squally wind speed reaching 45-55 kmph gusting to 65 kmph likely to commence along & off North Andhra Pradesh – Odisha coasts from the mid-night of today, the 3rd December and increase gradually becoming 80-90 kmph gusting to 100 kmph from 4th evening, for the subsequent 12 hours.
- Squally wind speed reaching 45-55 kmph gusting to 65 kmph also likely to commence along & off West Bengal coast from 4th December evening and become Gale wind speed reaching 60-70 kmph gusting to 80 kmph from the morning of 5th December for the subsequent 12 hours.

(iii) Sea condition

- Sea condition would be High over central Bay of Bengal during next 12 hours and High to very High over west-central & northwest Bay of Bengal from the early morning of 4th December for the subsequent 24 hours.
- Sea condition will be rough to very rough over along & off North Andhra Pradesh – Odisha coast from the mid-night of 3rd December and become High to very High from 4th Afternoon, for the subsequent 12 hours.
- It will be rough to very rough along & off West Bengal coast from 4th morning and very rough to High from the same evening for the subsequent 12 hours.

(iv) Storm surge warning.

- Storm surge of about 0.5 – 1m height above astronomical tide is likely to inundate low lying areas of coastal districts of Odisha around noon of 5th December.
- Fourth December being a new Moon day, higher astronomical tides of about 2-4 m height are likely along the coast of Odisha & West Bengal.

(v) Fishermen Warning

Fishermen are advised not to venture into westcentral and adjoining southeast & eastcentral Bay of Bengal on 3rd December, over west-central & northwest Bay of Bengal and along & off north Andhra Pradesh - Odisha- West Bengal coasts during 3rd - 5th December 2021 (Graphics enclosed).

(vi) Advisory to along & off shore Installations

The off-shore & alongshore operations along north Andhra Pradesh, Odisha & West Bengal coasts are advised to be judiciously regulated on 3rd December and to be suspended on 4th & 5th December 2021, to ensure safety of life & property.

Contact: Cyclone Warning Division, Office of the Director General of Meteorology,
India Meteorological Department, Ministry of Earth Sciences.

Phone: (91) 11-24652484, FAX: (91) 11-24643128, 24623220, E-mail: cwdhq2008@gmail.com, Website: rsmcnewdelhi.imd.gov.in

Spatial rainfall distribution: Isolated: <25%, A few: 26-50%, Many: 51-75%, Most: 76-100%

Rainfall amount (mm): Heavy rain: 64.5 – 115.5, Very heavy rain: 115.6 – 204.4, Extremely heavy rain: 204.5 or more.

(vii) EXPECTED IMPACT & ACTION SUGGESTED (For Srikakulam, Vizianagaram & Vishakhapatnam districts of north Coastal Andhra Pradesh; Gajapati, Ganjam, Puri, Nayagarh, Khurda, Cuttack, Jagatsinghpur & Kendrapara districts of Odisha)

A. Impact Expected

- Major damage to thatched houses/ huts.
- Breaking of tree branches, uprooting of trees.
- Minor damage to power and communication lines.
- Localized Flooding of roads, inundation and water logging in low lying areas due to Heavy rain & Tidal waves and closure of underpasses mainly in urban areas of the affected region.
- Occasional reduction in visibility due to heavy rainfall.
- Disruption of traffic in major cities due to water logging in roads leading to increased travel time.
- Minor damage to kutcha roads.
- Possibilities of damage to vulnerable structure.
- Localized Landslides/Mudslides
- Damage to horticulture and standing crops in some areas due to inundation. Damage to banana, Papaya & Moringa (Drumstick) trees.
- It may lead to riverine flooding in some river catchments (for riverine flooding please visit Web page of CWC)

B. Action Suggested

- Total suspension of fishing operations.
- Check for traffic congestion on your route before leaving for your destination.
- Follow any traffic advisories that are issued in this regard.
- Avoid going to areas that face the water logging problems often.
- Avoid staying in vulnerable structure.
- Harvest the ripen crops like Paddy & Horticultural crops and also secure the harvested crops securely from the damage due to rain and strong winds.

The intensification & likely movement of the system is under continuous surveillance and the concerned state governments are being informed regularly.

Kindly visit www.rsmcnewdelhi.imd.gov.in and www.mausam.imd.gov.in for regular updates.

Contact: Cyclone Warning Division, Office of the Director General of Meteorology,
India Meteorological Department, Ministry of Earth Sciences.

Phone: (91) 11-24652484, FAX: (91) 11-24643128, 24623220, E-mail: cwdhq2008@gmail.com, Website: rsmcnewdelhi.imd.gov.in

Spatial rainfall distribution: Isolated: <25%, A few: 26-50%, Many: 51-75%, Most: 76-100%

Rainfall amount (mm): Heavy rain: 64.5 – 115.5, Very heavy rain: 115.6 – 204.4, Extremely heavy rain: 204.5 or more.

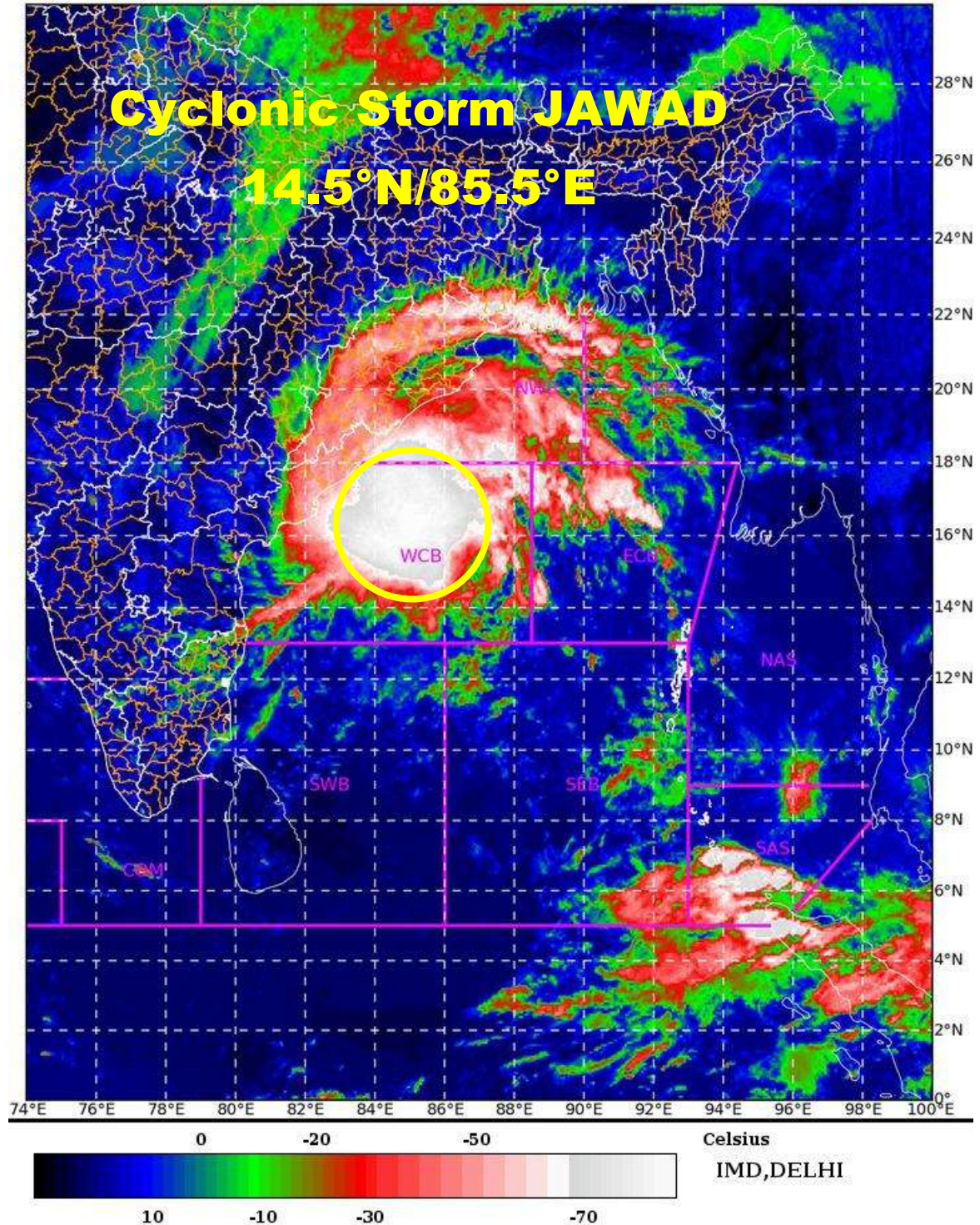
SAT : INSAT-3D IMG

03-12-2021/(0730 to 0757) GMT

IMG_TIR1_TEMP 10.8 um

03-12-2021/(1300 to 1327) IST

L1C Mercator

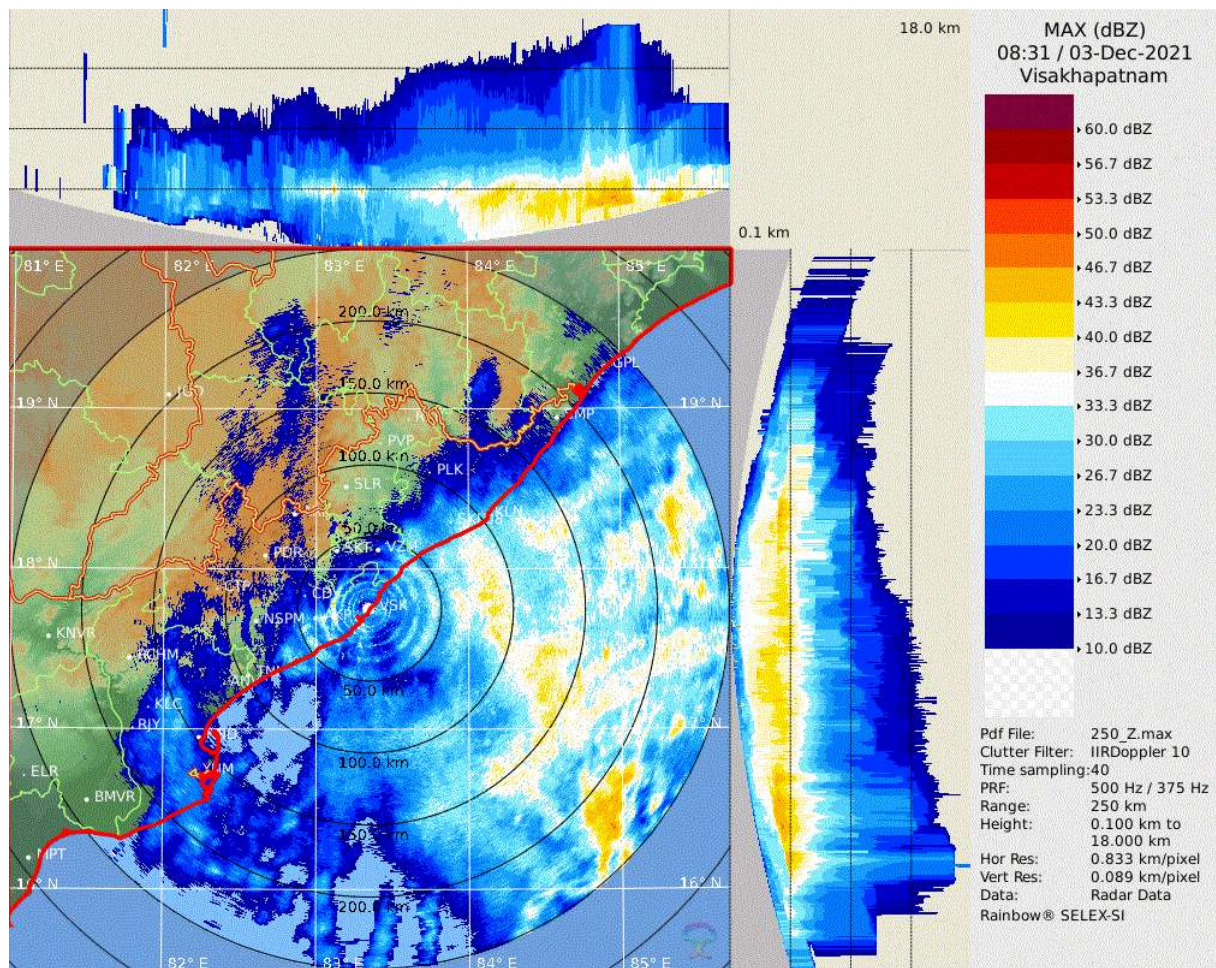


Contact: Cyclone Warning Division, Office of the Director General of Meteorology,
India Meteorological Department, Ministry of Earth Sciences.

Phone: (91) 11-24652484, FAX: (91) 11-24643128, 24623220, E-mail: cwdhq2008@gmail.com, Website: rsmcnewdelhi.imd.gov.in

Spatial rainfall distribution: Isolated: <25%, A few: 26-50%, Many: 51-75%, Most: 76-100%

Rainfall amount (mm): Heavy rain: 64.5 – 115.5, Very heavy rain: 115.6 – 204.4, Extremely heavy rain: 204.5 or more.



Doppler Weather RADAR imagery from Vishakhapatnam, depicting the approaching convective cloud towards north Andhra Pradesh coast.

Contact: Cyclone Warning Division, Office of the Director General of Meteorology,
India Meteorological Department, Ministry of Earth Sciences.

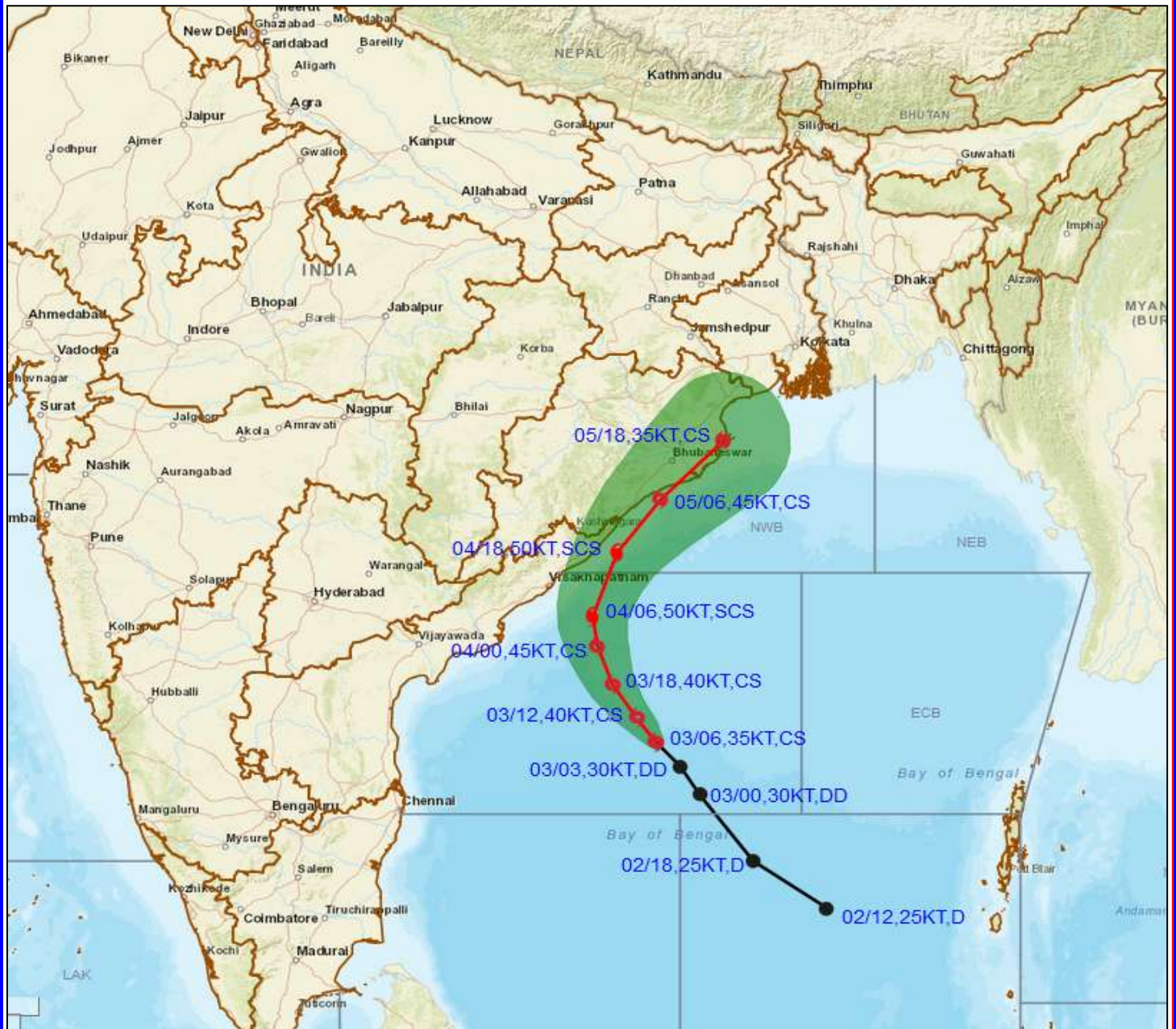
Phone: (91) 11-24652484, FAX: (91) 11-24643128, 24623220, E-mail: cwdhq2008@gmail.com, Website: rsmcnewdelhi.imd.gov.in

Spatial rainfall distribution: Isolated: <25%, A few: 26-50%, Many: 51-75%, Most: 76-100%

Rainfall amount (mm): Heavy rain: 64.5 – 115.5, Very heavy rain: 115.6 – 204.4, Extremely heavy rain: 204.5 or more.



OBSERVED AND FORECAST TRACK ALONGWITH CONE OF UNCERTAINTY OF CYCLONIC STORM 'JAWAD' OVER WESTCENTRAL BAY OF BENGAL BASED ON 0600 UTC OF 3rd DECEMBER, 2021



DATE/TIME IN UTC
IST=UTC + 0530
L: LOW PRESSURE AREA
WML: WELL MARKED LOW PRESSURE AREA
D: DEPRESSION (17-27 KT)
DD: DEEP DEPRESSION (28-33 KT)
CS: CYCLONIC STORM (34-47 KT)
SCS: SEVERE CYCLONIC STORM (48-63KT)
VSCS: VERY SEVERE CYCLONIC STORM (64-89 KT)
ESCS: EXTREMELY SEVERE CYCLONIC STORM (90-119 KT)
SuCS: SUPER CYCLONIC STORM (\geq 120 KT)

- LESS THAN 34 KT
- 34-47 KT
- \geq 48 KT
- OBSERVED TRACK
- FORECAST TRACK
- CONE OF UNCERTAINTY

Contact: Cyclone Warning Division, Office of the Director General of Meteorology,
India Meteorological Department, Ministry of Earth Sciences.

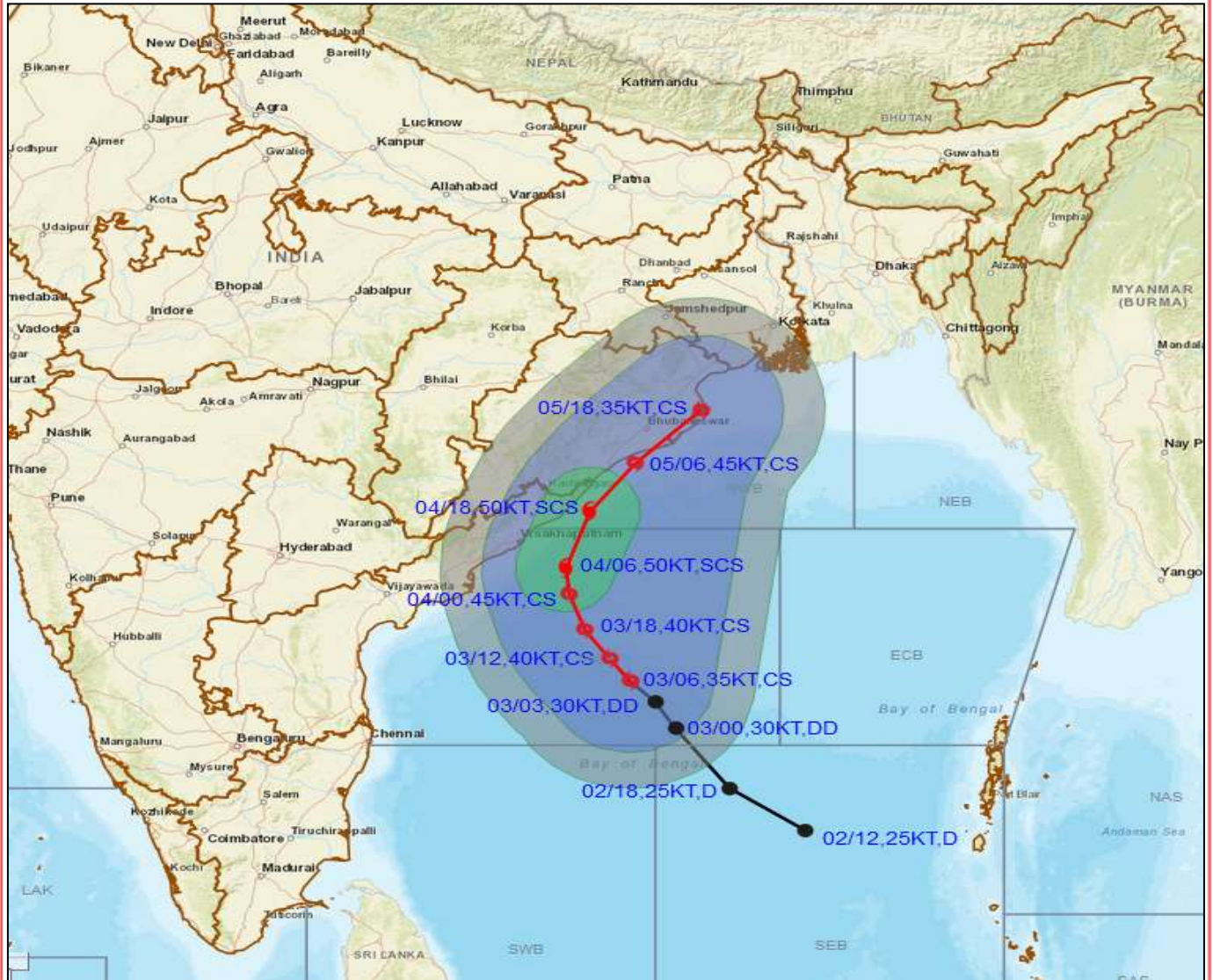
Phone: (91) 11-24652484, FAX: (91) 11-24643128, 24623220, E-mail: cwdhq2008@gmail.com, Website: rsmcnewdelhi.imd.gov.in

Spatial rainfall distribution: Isolated: <25%, A few: 26-50%, Many: 51-75%, Most: 76-100%

Rainfall amount (mm): Heavy rain: 64.5 – 115.5, Very heavy rain: 115.6 – 204.4, Extremely heavy rain: 204.5 or more.



OBSERVED AND FORECAST TRACK ALONGWITH QUADRANT WIND DISTRIBUTION OF CYCLONIC STORM 'JAWAD' OVER WESTCENTRAL BAY OF BENGAL BASED ON 0600 UTC OF 3rd DECEMBER, 2021



DATE/TIME IN UTC
 IST=UTC + 0530
 L: LOW PRESSURE AREA
 WML: WELL MARKED LOW PRESSURE AREA
 D: DEPRESSION (17-27 KT)
 DD: DEEP DEPRESSION (28-33 KT)
 CS: CYCLONIC STORM (34-47 KT)
 SCS: SEVERE CYCLONIC STORM (48-63KT)
 VSCS: VERY SEVERE CYCLONIC STORM (64-89 KT)
 ESCS: EXTREMELY SEVERE CYCLONIC STORM (90-119 KT)
 SuCS: SUPER CYCLONIC STORM (≥ 120 KT)

● LESS THAN 34 KT
 ○ 34-47 KT
 ● ≥ 48 KT
 — OBSERVED TRACK
 — FORECAST TRACK
 ● CONE OF UNCERTAINTY
AREA OF MAXIMUM SUSTAINED WIND SPEED:
 ■ 28-33 KT (52-61 KMPH)
 ■ 34-49 KT (62-91 KMPH)
 ■ 50-63 KT (92-117 KMPH)
 ■ ≥ 64 KT (≥118 KMPH)

IMPACT OVER THE SEA

MSW (knot/kmph)	Impact	Action
28-33 (52-61)	Very rough seas	Total suspension of fishing operations
34-49 (62-91)	High to very high seas	Total suspension of fishing operations
50-63 (92-117)	Very high seas	Total suspension of fishing operations
≥ 64 (≥118)	Phenomenal	Total suspension of fishing operations

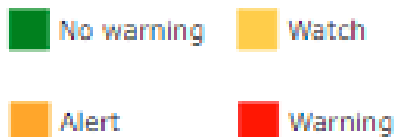
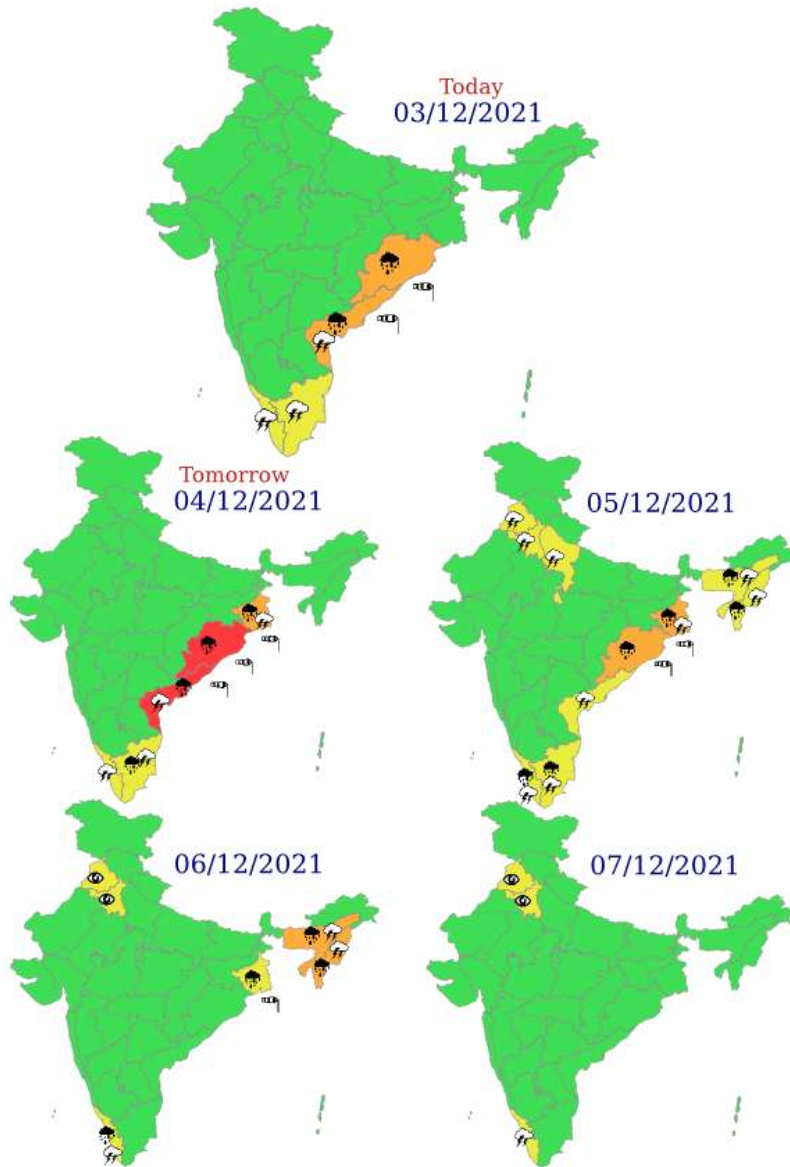
Contact: Cyclone Warning Division, Office of the Director General of Meteorology,
 India Meteorological Department, Ministry of Earth Sciences.

Phone: (91) 11-24652484, FAX: (91) 11-24643128, 24623220, E-mail: cwdhq2008@gmail.com, Website: rsmcnewdelhi.imd.gov.in

Spatial rainfall distribution: Isolated: <25%, A few: 26-50%, Many: 51-75%, Most: 76-100%

Rainfall amount (mm): Heavy rain: 64.5 – 115.5, Very heavy rain: 115.6 – 204.4, Extremely heavy rain: 204.5 or more.

Sub-division wise heavy rainfall warning for next 5 days



Contact: Cyclone Warning Division, Office of the Director General of Meteorology,
India Meteorological Department, Ministry of Earth Sciences.

Phone: (91) 11-24652484, FAX: (91) 11-24643128, 24623220, E-mail: cwdhq2008@gmail.com, Website: rsmcnewdelhi.imd.gov.in

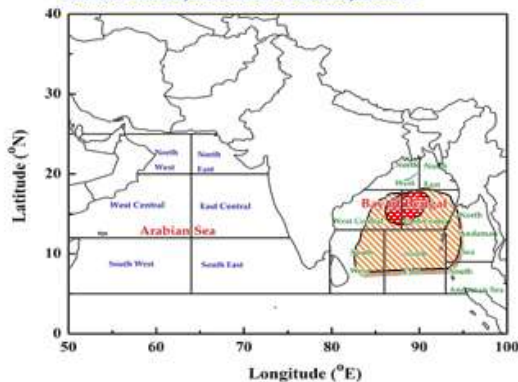
Spatial rainfall distribution: Isolated: <25%, A few: 26-50%, Many: 51-75%, Most: 76-100%

Rainfall amount (mm): Heavy rain: 64.5 – 115.5, Very heavy rain: 115.6 – 204.4, Extremely heavy rain: 204.5 or more.

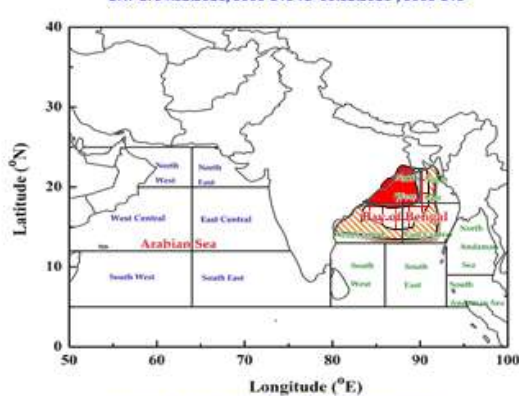
Fishermen Warning

INDIA METEOROLOGICAL DEPARTMENT FISHERMAN WARNING FOR BAY OF BENGAL AND ARABIAN SEA

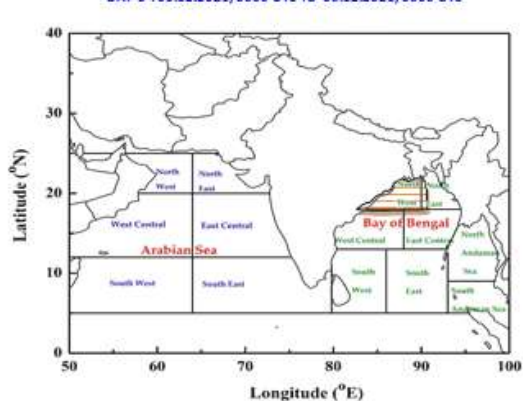
DAY-1: 03-12.2021/0600 UTC TO 04.12.2021/0600 UTC



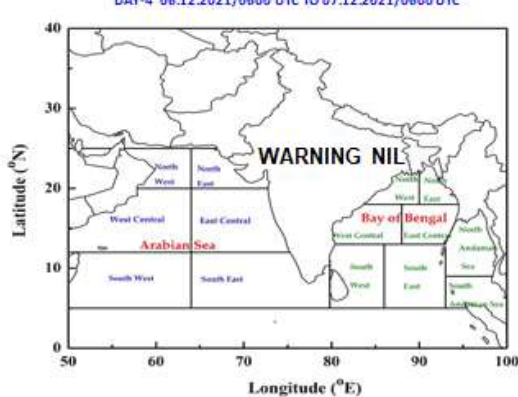
DAY-2: 04.12.2021/0600 UTC TO 05.12.2021 /0600 UTC



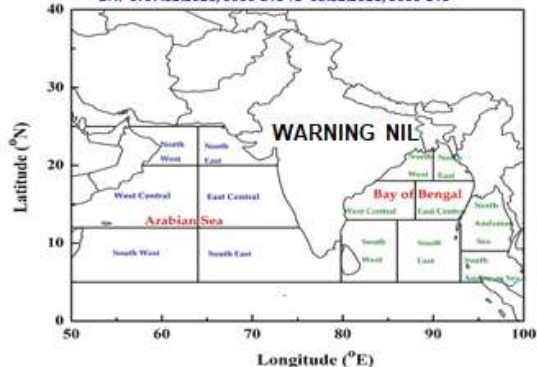
DAY-3: 05.12.2021/0600 UTC TO 06.12.2021/0600 UTC



DAY-4 06.12.2021/0600 UTC TO 07.12.2021/0600 UTC



DAY-5: 07.12.2021/0600 UTC TO 08.12.2021/0600 UTC



AREA UNDER FISHERMEN WARNING

-  40-50 KMPH G TO 60 KMPH (SQ.WEATHER)
-  45-55 KMPH GUSTING TO 65 KMPH
-  50-60 KMPH G TO 70 KMPH
-  60-70 KMPH G TO 80 KMPH
-  70-80 KMPH G TO 90 KMPH
-  80-90 KMPH G TO 95 KMPH
-  90-100 KMPH G TO 110 KMPH

Contact: Cyclone Warning Division, Office of the Director General of Meteorology,
India Meteorological Department, Ministry of Earth Sciences.

Phone: (91) 11-24652484, FAX: (91) 11-24643128, 24623220, E-mail: cwdhq2008@gmail.com, Website: rsmcnewdelhi.imd.gov.in

Spatial rainfall distribution: Isolated: <25%, A few: 26-50%, Many: 51-75%, Most: 76-100%

Rainfall amount (mm): Heavy rain: 64.5 – 115.5, Very heavy rain: 115.6 – 204.4, Extremely heavy rain: 204.5 or more.